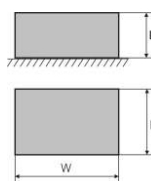
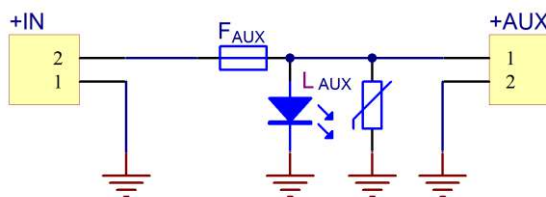


CODE: **AWZ604** v.1.0/I
NAME: **LB1/1x5A/2,5/AW/R/FTA fuse module**

EN**

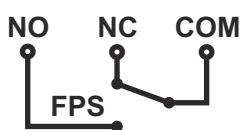


DESCRIPTION

The LB1/1x5A/2,5/AW/R/FTA fuse module is designed for power distribution in low-voltage systems requiring voltage of 10V±30V DC or 10V±24V AC (e.g. buffer power supply, transformer etc.). It is fitted with the IN input for power supply and 1 independent power paths protected with 5A fuses. Output state AUX is indicated by L_{AUX} LED. Fuse failure is indicated by turning off the appropriate L_{AUX}. Additionally, in the case of failure, the L_{FPS} LED are switched on, while the relay contacts are switched. The FPS output can be used for remote control of a module e.g. external optical indication. The module is adapted for connection of cables with a maximum cross section of 2,5mm².

SPECIFICATIONS

Supply voltage	10 V ± 30 V DC (-2%/+2%) 10 V ± 24 V AC (-2%/+2%)
Output voltage	U _{AUX} = U _{IN} (equal to supply voltage)
Current consumption	12mA± 30mA @ U _{in} =10 ± 30V DC 40mA± 45mA @ U _{in} =10 ± 24V AC
Number of power inputs	1 (IN terminals) – max. 2,5mm ² cable
Number of power outputs	1 (AUX terminals) – max. 2,5mm ² cable
Protections against:	
- a short circuit SCP	- 1 x 5A
- an overload OLP	- 1 x 5A
- a surge	- varistors
LED indication	- green LED L _{AUX} - status of the AUX outputs - red LED L _{FPS} – indicates failure
Fuses F _{AUX}	F 5A
Operating conditions	II environmental class, -10°C ± 50°C
Dimensions	70 x 43 x 40 (WxHxD) [mm]
Installation	A mounting panel with an adhesive tape,mounting screws x2 (holes Ø 3mm)
Connectors:	
- power supply input/output, technical output	- screw connection Ø0,51±2,05 (AWG 24-12) 0,5 ± 2,5mm ²
Net/gross weight	0,04kg / 0,06kg
Declarations, warranty	CE, 2 year from the production date



Electrical diagram of the relay output