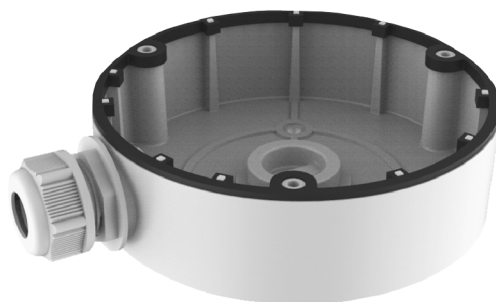


# DS-1280ZJ-DM8



## FEATURES:

- Aluminum alloy material with surface spray treatment
- Side inlet and bottom inlet
- Interchangeable bottom waterproof cover and side gland nut
- Waterproof design

### DS-1280ZJ-DM8

#### SPEC

Parameters	Junction box
Colour	Hik White
Feature	Suitable for dome cameras
Material	Aluminum Alloy
Dimension	Ø126.7 x 35mm
Weight	210g

#### INFORMATION:

- The junction box should be installed on the flat surface.
- The waterproof rubber is necessary for the outdoor application.
- The wall must be capable of supporting at least 3 times as much as the total weight of the camera and the bracket.
- The maximum load capacity of the bracket is 1 Kg (2.2 lb.).

unit: mm

