

Hikvision Network Speaker
Smarter audio, made easy

Hikvision Network Speaker

Smarter audio, made easy



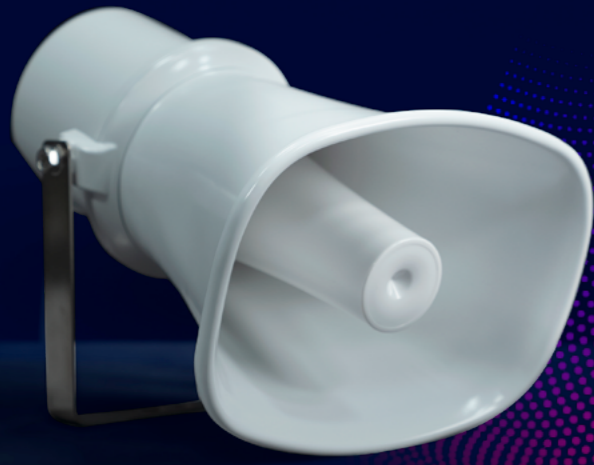
www.hikvision.com
support@hikvision.com



Distributor Address

Meet Network Speaker

Perfectly integrating Hikvision's extensive video security expertise with smart audio capabilities, Hikvision network speaker offers advanced audio & video linkage solution for during-the-event intervention. It is the ideal choice for delivering live or pre-recorded voice messages, promoting proactive security measures and more.



Why Choose Hikvision

Smarter audio with video linkage

The integrated system combining IP speakers and cameras enables swift response to potential threats with powerful and timely during-the-event deterrence.



- A camera detects an event
- The network speaker is automatically triggered



- Up to 300 m coverage distance for effective perimeter protection
- Up to 124 dB acoustic pressure for powerful danger warning

Easier operation & management

The system supports device adding and remote configuration. Moreover, it can be managed all-in-one via HikCentral or third-party platforms.



Key Features

Easy Operation & Maintenance

- Support batch adding devices & upgrade
- Support one system double backup, improving upgrade stability
- Support remote configuration
- Support NTP time synchronization

TTS (Text-to-Speech)

- English
- Spanish
- Japanese
- Thai

Built-in eMMC

- eMMC can allocate space to store audio files
- No additional SD card required
- 4GB eMMC (1GB for audio file storage)

Multiple Broadcast Modes

- Live broadcast
- Scheduled broadcast
- Alarm linkage broadcast
- Emergency mustering broadcast

Video & Audio Linkage

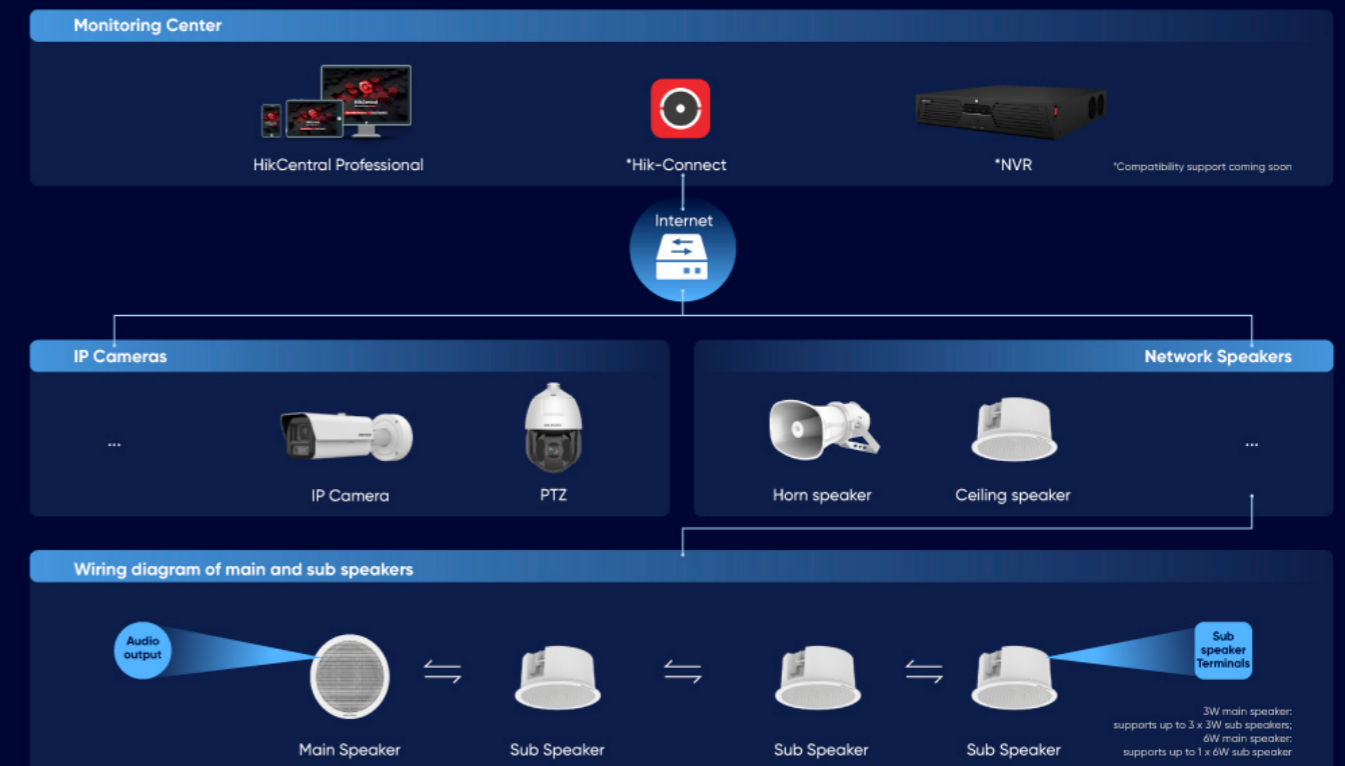
- Greatly improve the protection level via the combination of network speakers with the video security system

Two-way Audio

- HikCentral Professional and Network Speaker (with built-in mic) can communicate via two-way audio function



Solution Topology

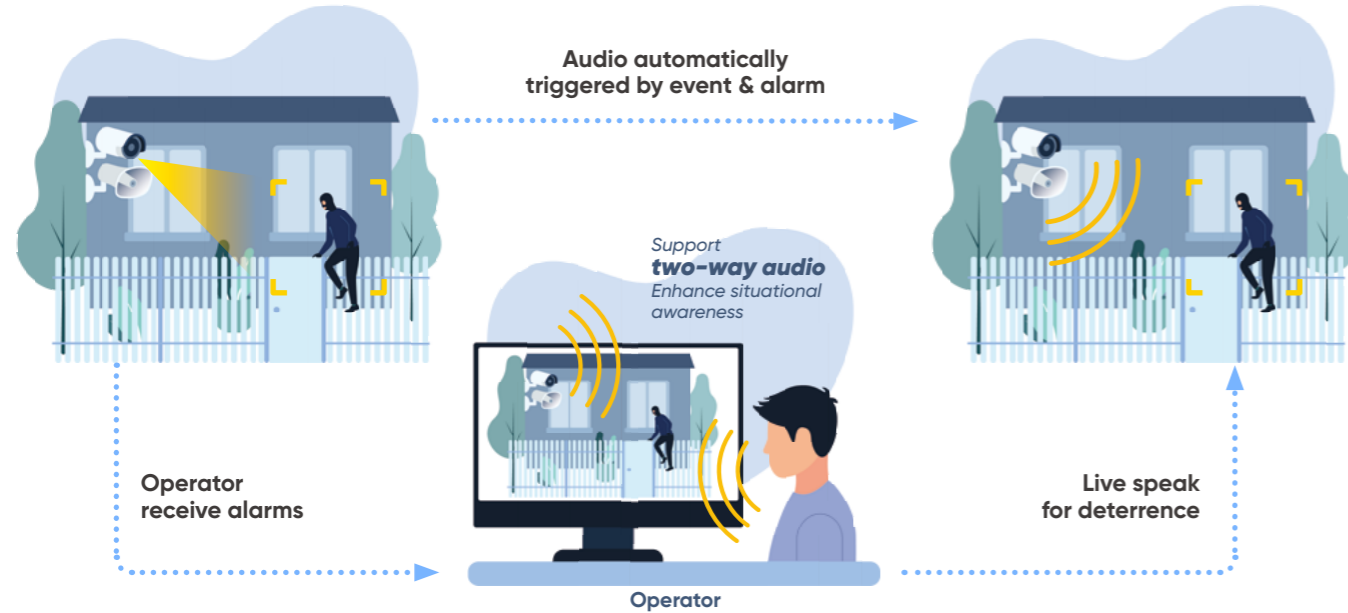


Smart Applications

Security protection

Smart video & audio linkage

Typical scenarios: perimeters, restricted areas; riversides



Emergency broadcasting

Smart & swift fire evacuation

Typical scenarios: buildings, shopping malls

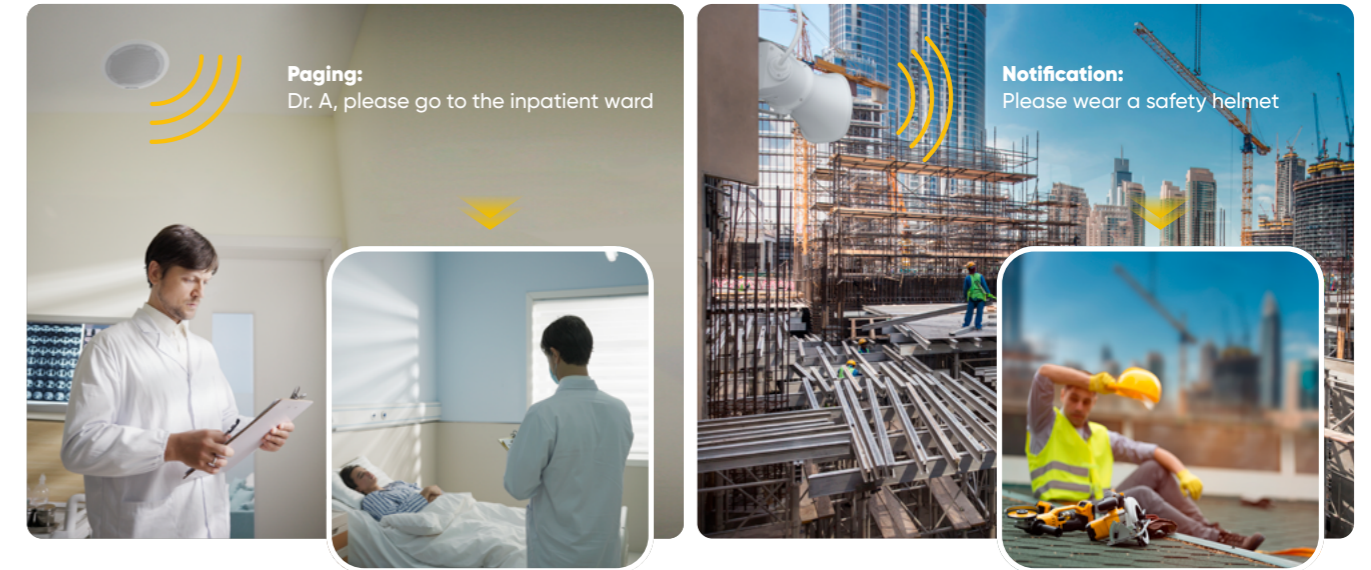


Paging & notification & background music

Smart multi-zone management

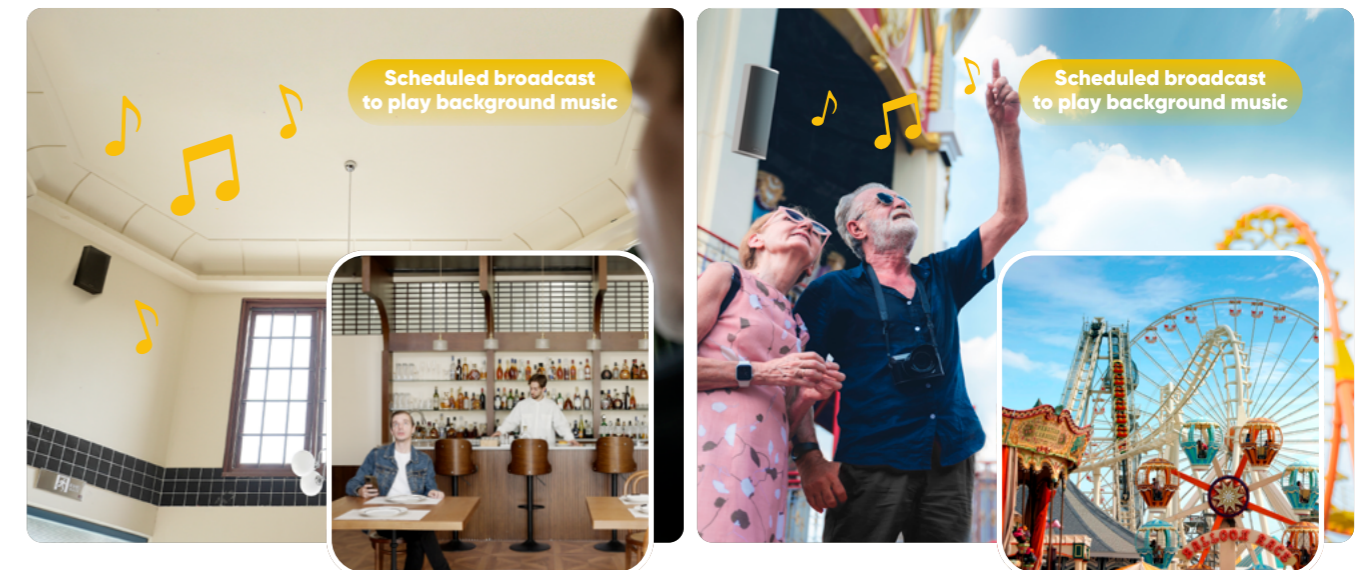
Typical scenarios: airports, hospitals, construction sites, schools

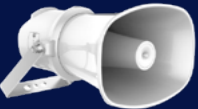



Live broadcast for paging and real-time notification to improve the efficiency of message delivery



Typical scenarios: retail stores, restaurants, shopping malls, parks

Scheduled broadcasting background music to build the right atmosphere and enhance the experience



	Product Model	Speaker							Interface				General		Approval
		Speaker Type	Rated Power	Impedance	Max. Acoustic Pressure	Direction	Frequency Response	Built-in Mic	API	Alarm	Audio In	Audio Out	Power	Material	Protection
Network Horn Speaker 	DS-QAZ1307G1T-E	Main speaker	7 W	8 Ω	121 dBSPL	70° horizontal by 100° vertical	300 Hz to 13 kHz	Support	ISAPI, ISUP	Alarm input ×1	/	/	PoE IEEE 802.3 at 16.4 w (max)	Metal	IP66 IP67
	DS-QAZ1307G1-E	Main speaker	7 W	8 Ω	121 dBSPL	70° horizontal by 100° vertical	300 Hz to 13 kHz	Support	ISAPI, ISUP	/	/	/	PoE IEEE 802.3 at 16.4 w (max)	Metal	IP66 IP67
	DS-QAZ1325G1T	Main speaker	25 W	8 Ω	124 dBSPL	70° horizontal by 100° vertical	300 Hz to 8 kHz	Support	ISAPI, ISUP	Alarm input ×1	/	/	24 VDC , 1167 mA , 28 W	Metal	IP66 IP67
Network Ceiling Speaker 	DS-QAZ1203G1-BE	Main speaker	3 W	8 Ω	97 dBSPL	All directions	300 Hz to 15 kHz	/	ISAPI, ISUP	Alarm input ×2	3.5 mm audio interface ×1	Fixed resistance output ×1, phoenix terminal, 8 Ω	PoE: 802.3 at, 12 VDC / 1.5 A	Device body: plastic; Mesh cover: metal	/
	DS-QAZ1206G1-BE	Main speaker	6 W	8 Ω	100 dBSPL	All directions	300 Hz to 15 kHz	/	ISAPI, ISUP	Alarm input ×2	3.5 mm audio interface ×1	Fixed resistance output ×1, phoenix terminal, 8 Ω	PoE: 802.3 at, 12 VDC / 1.5 A	Device body: plastic; Mesh cover: metal	/
	DS-QAZ0203G1-S Connecting to the main speaker for sound amplification	Sub speaker	3 W	8 Ω	97 dBSPL	All directions	100 Hz to 15 kHz	/	/	/	Fixed resistance input ×1, 8 Ω	/	/	Device body: plastic; Mesh cover: metal	/
	DS-QAZ0206G1-S Connecting to the main speaker for sound amplification	Sub speaker	6 W	8 Ω	100 dBSPL	All directions	100 Hz to 15 kHz	/	/	/	Fixed resistance input ×1, 8 Ω	/	/	Device body: plastic; Mesh cover: metal	/
Network Cabinet Speaker 	DS-QAZ1110G1-B	Main speaker	10 W	8 Ω	98 dBSPL	All directions	100 Hz to 20 kHz	Support	ISAPI, ISUP	/	3.5 mm audio interface ×1 Voltage Input ×1, COM 100 V	Fixed resistance output ×1, phoenix terminal, 8 Ω	24 VDC / 1.5 A	Wooden	/
	DS-QAZ1120G1-B	Main speaker	20 W	8 Ω	101 dBSPL	All directions	100 Hz to 20 kHz	Support	ISAPI, ISUP	/	3.5 mm audio interface ×1 Voltage Input ×1, COM 100 V	Fixed resistance output ×1, phoenix terminal, 8 Ω	24 VDC / 1.5 A	Wooden	/
	DS-QAZ0110G1-S Connecting to the main speaker for sound amplification	Sub speaker	10 W	8 Ω	98 dBSPL	All directions	100 Hz to 20 kHz	/	/	/	Fixed resistance input ×1, 8 Ω	/	/	Wooden	/
Network Column Speaker 	DS-QAZ1430G1	Main speaker	30 W	8 Ω	97.5 dBSPL	All directions	100 Hz to 20 kHz	Support	ISAPI, ISUP	Alarm input ×2	Line in ×2, phoenix terminal	/	24 VDC / 1.5 A	Metal	IP66
	DS-QAZ1460G1	Main speaker	60 W	4 Ω	106 dBSPL	All directions	100 Hz to 20 kHz	Support	ISAPI, ISUP	Alarm input ×2	Line in ×2, phoenix terminal	/	220 VAC	Metal	IP66
	DS-QAZ14A2G1	Main speaker	120 W	4 Ω	107.5 dBSPL	All directions	100 Hz to 20 kHz	Support	ISAPI, ISUP	Alarm input ×2	Line in ×2, phoenix terminal	/	220 VAC	Metal	IP66