



SHP-1563FW

In-ceiling Mount



Key Features

- Enclosure : Aluminum, Plastic
- Dimensions : $\Phi 268 \times 190 \text{mm}$ ($\Phi 10.55 \times 7.48''$)
- Weight : 1.2kg (2.65lb)
- Color : White

SHP-1563FW

In-ceiling Mount



Specifications

Mechanical	
Color	White
Material	Enclosure : Aluminum + PC Top cover : Polycarbonate(PC)
RAL code	RAL9003
Product dimensions / weight	ø268x190mm (ø10.55x7.48") / 1.2kg (2.65lb)
Tile thickness	3~70mm
Supported products	XNP-6400/8250/9250, XNP-6400R/8250R/9250R, QNP-6250R/6320R, XNP-C6403/C8253/C9253, XNP-C6403R/C8253R/C9253R

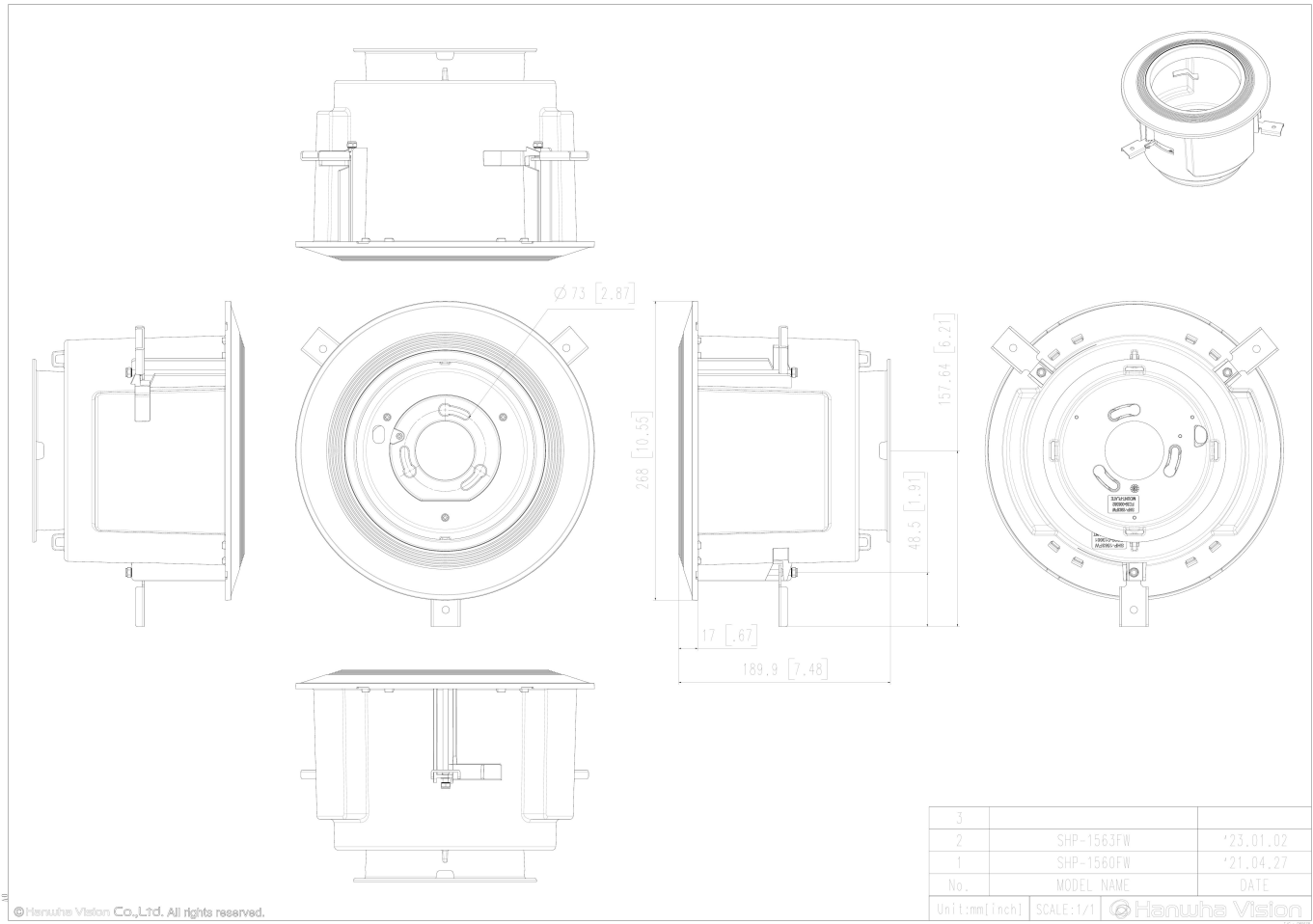
SHP-1563FW

In-ceiling Mount



CAD

Unit:mm [inch]



© Hanwha Vision Co., Ltd. All rights reserved.