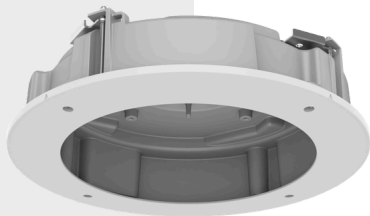


SHD-2501FPW



# SHD-2501FPW

In-ceiling Mount



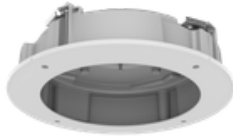
## Key Features

- Color : White
- Materials : PC(Polycarbonate), Aluminum
- Dimensions (WXH) : ø352x104.3mm (ø13.86x4.1")
  - ※ Conduit hole: 19.1mm(3/4")(M25), 12.7mm(1/2")(M20)
- Weight : 2005g (4.52lb)
- Max. load : 5kg (11.02lb)
  - ※ Maximum load of ceiling board : 13.8kg (30.4lb)

SHD-2501FPW

# SHD-2501FPW

In-ceiling Mount

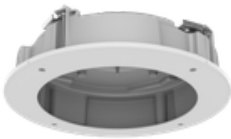


## Specifications

Mechanical	
Color	White
Material	PC(Polycarbonate), Aluminum
RAL code	RAL9003
Product dimensions / weight	ø352x107.4mm(ø13.86x4.23") / 2450g(5.40lb)
Tile thickness	10~70mm(0.4~2.8")
Mount Screw size	TR20
Max. load	5Kg(11.02lb) ※ Maximum load of ceiling board: 11.6kg(25.60lb)
Conduit hole	19.1mm(3/4")(M25), 12.7mm(1/2")(M20)
Supported products	PNM-C19183RVTP

# SHD-2501FPW

In-ceiling Mount



CAD

Unit: mm [inch]

