



Network

Dome

XNV-6120R

2M H.265 IR Dome Camera



Key Features

- Max. 2Megapixel (1920 x 1080) resolution
- 5.2 ~ 62.4mm (Optical 12X) Optical Lens
- Max. 60fps@all resolutions (H.265 / H.264)
- H.265, H.264, MJPEG Codec Supported
- Multiple streaming, IVA, Sound Classification
- Day & Night (ICR), WDR (150dB), Defog, Handover
- Fog Detection, Tampering, Motion Detection
- SD / SDHC / SDXC 2 Slot (Max. 512GB)
- Hallway View, WiseStreamII Support
- IR Viewable Length 70m (229.66ft)

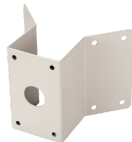
Compatible Accessories (Optional)



SBP-300HM6



SBP-300PM



SBP-300KM



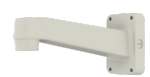
SBP-300WM1



SBP-300LM



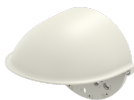
SPB-VAN71



SBP-390WM2



SBP-300CM



SBV-160WC



SBP-300B



SHD-1600FPW



SBP-160TM



SHP-1680FW



SBP-300WM

XNV-6120R

2M H.265 IR Dome Camera



Specifications

Video	
Imaging Device	1/2.8" 2MP CMOS
Resolution	1920x1080, 1280x1024, 1280x960, 1280x720, 1024x768, 800x600, 800x448, 720x576, 720x480, 640x480, 640x360, 320x240
Max. Framerate	H.265/H.264: Max. 60fps/50fps(60Hz/50Hz) MJPEG: Max. 30fps/25fps(60Hz/50Hz)
Min. Illumination	Color: 0.03Lux(F1.6, 1/30sec) BW: 0Lux(IR LED On)
Video Out	CVBS: 1.0 Vp-p / 75Ω composite, 720x480(N), 720x576(P) for installation USB: Micro USB Type B, 1280x720 for installation
Lens	
Focal Length (Zoom Ratio)	5.2~62.4mm(12x) zoom
Max. Aperture Ratio	F1.6(Wide)~F3.0(Tele)
Angular Field of View	H: 54.58°(Wide)~5.30°(Tele) / V: 32.19°(Wide)~3.00°(Tele) / D: 61.4°(Wide)~6.06°(Tele)
Min. Object Distance	2.1m(6.89ft)
Focus Control	OneshotAF
Lens Type	DC auto iris
Pan / Tilt / Rotate	
Pan / Tilt / Rotate Range	0°~354° / 0°~75° / 0°~355°
Operational	
Camera Title	Displayed up to 85 characters
Day & Night	Auto(ICR)
Backlight Compensation	BLC, HLC, WDR, SSSDR
Wide Dynamic Range	150dB
Digital Noise Reduction	SSNR V
Digital Image Stabilization	Support
Defog	Support
Motion Detection	8ea, 8point polygonal zones
Privacy Masking	32ea, polygonal zones - Color: Grey/Green/Red/Blue/Black/White - Mosaic
Gain Control	Low / Middle / High
White Balance	ATW / AWC / Manual / Indoor / Outdoor
LDC	Support
Electronic Shutter Speed	Minimum / Maximum / Anti flicker (2~1/12,000sec)
Video Rotation	Flip, Mirror, Hallway view(90°/270°)

XNV-6120R

Analytics	Defocus detection, Directional detection, Fog detection, Face detection, Motion detection, Digital auto tracking, Appear/Disappear, Enter/Exit, Loitering, Tampering, Virtual line, Audio detection, Sound classification
Alarm I/O	Input 1ea / Output 1ea
Alarm Triggers	Analytics, Network disconnect, Alarm input
Alarm Events	File upload via FTP and e-mail Notification via e-mail SD/SDHC/SDXC or NAS recording at event triggers Alarm output
Audio In	Selectable(mic in/line in) Supply voltage: 2.5VDC(4mA), Input impedance: 2K Ohm
Audio Out	Line out, Max.output level: 1Vrms
IR Viewable Length	70m(229.66ft)

Network

Ethernet	RJ-45(10/100BASE-T)
Video Compression	H.265/H.264: Main/Baseline/High, MJPEG
Audio Compression	G.711 u-law /G.726 Selectable G.726(ADPCM) 8KHz, G.711 8KHz G.726: 16Kbps, 24Kbps, 32Kbps, 40Kbps AAC-LC: 48Kbps at 16KHz
Smart Codec	Manual(5ea area), WiseStream II
Bitrate Control	H.264/H.265: CBR or VBR MJPEG: VBR
Streaming	Unicast(20 users) / Multicast Multiple streaming(Up to 10 profiles)
Protocol	IPv4, IPv6, TCP/IP, UDP/IP, RTP(UDP), RTP(TCP), RTCP,RTSP, NTP, HTTP, HTTPS, SSL/TLS, DHCP, FTP, SMTP, ICMP, IGMP, SNMPv1/v2c/v3(MIB-2), ARP, DNS, DDNS, QoS, PIM-SM, UPnP, Bonjour, LLDP, SRTMP
Security	HTTPS(SSL) Login Authentication Digest Login Authentication IP Address Filtering User access log 802.1X Authentication(EAP-TLS, EAP-LEAP)
Application Programming Interface	ONVIF Profile S/G/T SUNAPI(HTTP API) Wisenet open platform

General

Web Viewer	Supported OS: Windows 7, 8.1, 10, Mac OS X 10.10, 10.11, 10.12 Recommended Browser: Google Chrome Supported Browser: MS Explore11, MS Edge, Mozilla Firefox(Window 64bit only), Apple Safari(Mac OS X only)
Edge Storage	Micro SD/SDHC/SDXC 2slot 512GB
Memory	1024MB RAM, 256MB Flash

Environmental & Electrical

Operating Temperature / Humidity	-40°C~+55°C(-40°F ~ +131°F) / Less than 90% RH * Start up should be done at above -35°C
Storage Temperature / Humidity	-50°C ~ +60°C (-58°F ~ +140°F) / Less than 90% RH
Certification	IP66/IP67, IK10, NEMA 4X
Input Voltage	PoE(IEEE802.3af, Class3), 12VDC, 24VAC
Power Consumption	PoE : Max 12.95W 12VDC : Max. 11.5W 24VAC : Max. 14W

Mechanical

Color / Material	Ivory / Aluminum
Product Dimensions / Weight	Ø160x128.5mm(6.30"x5.06"), 995g(2.19 lb)

Design and specifications are subject to change without notice. The latest product information / specification can be found at HanwhaVision.com

Hanwha Vision is formerly known as Hanwha Techwin.

XNV-6120R

2M H.265 IR Dome Camera



CAD

Unit:mm [inch]

*This parts should not contain any substances which are specified in 4300-0033X

NO.	PART NAME	CODE NO.	MATERIAL	QTY	REMARK
1	XNV-6120R-1000-2mm-1pc-10100	000000	ABS+PC+FR	1	00000000

Dimensions shown in CAD drawings:

- Top view: $\phi 118(4.65")$, $128.44(4.99")$, $\phi 60(2.36")$
- Front view: $128.45(5.06")$, $63.1(2.48")$, $\phi 120(4.72")$
- Rear view: $\phi 120(4.72")$

STANDARD TOLERANCE	UNIT	DESIGN	CHECK	APPROVAL	PART NAME
ENVY	mm	N.P. Hanwha	-	Yong-Min Joo	XNV-6120R-1000-2mm-1pc-10100
SCALE	1/1	17.03.24	-	17.03.24	MODEL NAME
					CODE NO.
					00000

CHANGE