

Network

TNU-6322ER

2MP Explosion-proof Camera



Key Features

- Max. 2MP (1920 x 1080) resolution
- H: 61.8-(Wide)~2.19-(Tele) / V: 36.2-(Wide)~1.24-(Tele) Field of View
- Max. 60fps@2MP (H.265, H.264)
- H.265, H.264, MJPEG codec, WiseStream II
- IR viewable length 200m
- Day & Night (Auto ICR), WDR (120dB)
- Pan/Tilt : 0.5-/sec ~80-/sec, Endless rotation, Preset (300ea)
- Explosion-proof certificate: IECEx, ATEX, KCs, PESO
- Stainless 316L, Built-in wiper
- IP67, IK10

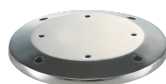
Compatible Accessories (Optional)



SBE-100PM



SBE-100WM



SBE-100B

TNU-6322ER

2MP Explosion-proof Camera



Specifications

Video

Imaging Device	1/2.8" CMOS
Resolution	1920x1080, 1280x1024, 1280x960, 1280x720, 1024x768, 800x600, 800x448, 720x576, 720x480, 640x480, 640x360, 320x240
Max. Framerate	H.265/H.264: Max. 60fps/50fps(60Hz/50Hz) MJPEG: Max. 30fps/25fps(60Hz/50Hz)
Min. Illumination	Color: 0.05Lux(F1.6, 1/30sec) BW: 0.005Lux(F1.6, 1/30sec), 0Lux(IR LED on)

Lens

Focal Length (Zoom Ratio)	4.44~142.6mm(32x) zoom
Max. Aperture Ratio	F1.6(Wide)~F4.4(Tele)
Angular Field of View	H: 61.8-(Wide)~2.19-(Tele) / V: 36.2-(Wide)~1.24-(Tele)
Min. Object Distance	Wide 1.5m, Tele 2m
Focus Control	Oneshot AF
Lens Type	DC auto iris

Pan / Tilt / Rotate

Pan Range	360- Endless
Pan Speed	0.5-/sec ~80-/sec
Tilt Range	180-(-90- ~90-)
Tilt Speed	0.1-/sec ~60-/sec
Sequence	Preset(300ea), Swing, Group(6ea), Trace, Tour, Auto Run, Schedule
Preset Accuracy	±0.25-

Operational

Camera Title	Displayed up to 85 characters
Direction Indicator	Support
Day & Night	Auto(ICR)
Backlight Compensation	BLC, HLC, WDR, SSSDR
Wide Dynamic Range	120dB
Digital Noise Reduction	SSNR V
Digital Image Stabilization	Support
Defog	Support
Motion Detection	8ea, 8point polygonal zones
Gain Control	Low / Middle / High
White Balance	ATW / AWC / Manual / Indoor / Outdoor
Electronic Shutter Speed	Minimum / Maximum / Anti flicker (1~1/12,000sec)
Analytics	Defocus detection, Directional detection, Fog detection, Face detection, Motion detection, Appear/Disappear, Enter/Exit, Loitering, Tampering, Virtual line, Audio detection

Design and specifications are subject to change without notice. The latest product information / specification can be found at HanwhaVision.com.

Hanwha Vision is formerly known as Hanwha Techwin.

TNU-6322ER

Alarm I/O	Input 1ea / Output 1ea
Alarm Triggers	Analytics, Network disconnect, Alarm input
Alarm Events	File upload via FTP and e-mail Notification via e-mail NAS recording at event triggers Alarm output PTZ Preset
Audio In	Selectable(mic in/line in) Supply voltage: 2.5VDC(4mA), Input impedance: 2K Ohm
Audio Out	Line out, Max.output level: 1Vrms
IR Viewable Length	200m
Water Removal	Support (with Wiper)

Network	
Ethernet	RJ-45 (10/100BASE-T)
Video Compression	H.265/H.264: Main/Baseline/High, MJPEG
Audio Compression	G.711 u-law /G.726 Selectable G.726(ADPCM) 8KHz, G.711 8KHz G.726: 16Kbps, 24Kbps, 32Kbps, 40Kbps AAC-LC: 48Kbps at 16KHz
Smart Codec	Manual(5ea area), WiseStream II
Bitrate Control	H.264/H.265: CBR or VBR MJPEG: VBR
Streaming	Unicast(20 users) / Multicast Multiple streaming(Up to 10 profiles)
Protocol	IPv4, IPv6, TCP/IP, UDP/IP, RTP(UDP), RTP(TCP), RTCP,RTSP, NTP, HTTP, HTTPS, SSL/TLS, DHCP, FTP, SMTP, ICMP, IGMP, SNMPv1/v2c/v3(MIB-2), ARP, DNS, DDNS, QoS, PIM-SM, UPnP, Bonjour
Security	HTTPS(SSL) login authentication Digest login authentication IP address filtering User access log 802.1X authentication(EAP-TLS, EAP-LEAP)
Application Programming Interface	ONVIF Profile S/G/T SUNAPI(HTTP API) Wisenet open platform

General	
Webpage Language	English, Korean, Chinese, French, Italian, Spanish, German, Japanese, Russian, Swedish, Portuguese, Czech, Polish, Turkish, Dutch, Hungarian, Greek
Memory	1024MB RAM, 256MB Flash

Environmental & Electrical	
Operating Temperature / Humidity	-40°C~+60°C(-40°F ~ +140°F) / Less than 95% RH
Storage Temperature / Humidity	-30°C~+60°C(-22°F ~ +140°F) / Less than 95% RH
Certification	IECEX, ATEX, KCs, KC, CE IP67, IK10, PESO certified
Input Voltage	24VAC
Power Consumption	24VAC: Max. 99W (Camera) 24VAC: Max. 50W (IR)

Mechanical	
Color / Material	Metalic Silver / Stainless 316L
Product Dimensions / Weight	611(W)x438(H)x235(D)mm(24.06x17.24x9.25"), 36kg(79.37lb)

TNU-6322ER

2MP Explosion-proof Camera



CAD

Unit:mm [inch]

