

# Wisenet Viewer

NVR/DVR Management Software (v1.03.00)

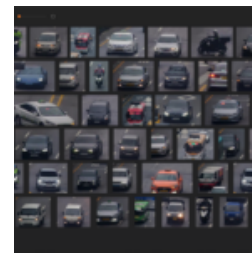
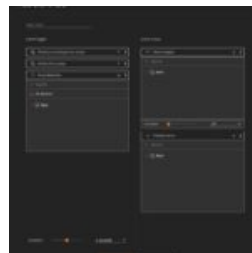
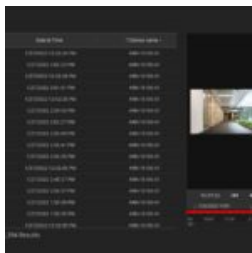


## Key Features

- Multiple OS support (Windows, macOS, Ubuntu)
- Easy and intuitive UI
- Flexible channel division and custom layout
- Search and play recorded video
- Timeline thumbnail preview and multi-timeline support
- AI search (Person, Face, Vehicle, LPR)
- Fisheye dewarping
- Multiple applications on multiple monitors
- Display web pages (ex. NVR web-viewer)
- Media files play in the layout
- Event trigger and action rule management
- Log search (Event, System, and Audit)
- Remote connection (DDNS/P2P\*)
- User permission management

# Wisenet Viewer

NVR/DVR Management Software  
(v1.03.00)



## Specifications

General		
Media	Video streaming protocol	RTP/RTSP (UDP/TCP/HTTP/HTTPS)
	Video format	H.265, H.264, MJPEG
	Video resolution	Depending on the device
	Display	Multiple application on multiple monitors
	Audio format	G.711 u-law (PCM), G.726 (ADPCM), AAC, 2-Way audio
	Audio control	Audio volume control
	Decoding	Hardware accelerator(NVIDIA CUVID, Intel Quick Sync)
Video	Functions	PTZ, Fisheye dewarping, Focus, Brightness/Contrast, Crop area, Capture, Show video status
	PTZ control	Pan, Tilt, Zoom, Preset, Focus control, Swing, Group, Tour, Trace
	Live local recording	Up to 2hours, mkv, wnm(Wisenet media file)
	Video rotation	90°, 180°, 270°
	Fisheye	Fisheye view mode(Original, Single, Quad, Panorama), PTZ
	Aspect ratio	16:9, 4:3, Stretch/Keep aspect ratio
	Change video profile	High/Low settings only
Playback	Video status	Resolution, Framerate, Bitrate, Video format, Profile information, Audio format
	Video control	Start/Pause, Forward/Backward speed playback, Previous/Next event, Keyboard shortcut, Playback sync/Individual playback
	Playback speed	1x, 2x, 4x, 8x, 16x, 32x, 64x, 128x, 256x
	Timeline	Event filter, Bookmark, Thumbnail, Multi timeline(up to 64)
	Export	Up to 24hours, Single/Multi channel export, mkv, wnm(Wisenet media file with standalone player), Encryption password(wnm format only), Digital signature
Video tile	Search mode	Calendar, Timeline, Event, AI, Bookmark, Smart search
	Tile pattern	Flexible grid(Zoom in/out, Drag), Auto fit, Keyboard shortcut
	Supported type	Channel, Media file, Browser
	Media file	Image : jpeg, png, jpg, bmp Video : avi, mkv, mp4, wnm(Wisenet media file), SEC
	Browser	Web page
	Layout	Multi-tab, Layout management, Layout sequence

Event	Notification	Device analytics events, Device system events
	Event rule	Combine Event trigger, Event action, Event schedule, and duration
	Event Trigger	Device analytics events, Device system events (Wisenet viewer supports events that device support only.)
	Event Action	Priority alarm, Open the layout, Alarm output, E-mail
	Device analytics events	Motion detection, Video analytics (Passing, Intrusion, Entering, Exiting, Appearing, Disappearing, Loitering), Tampering detection, Face detection, Defocus detection, Fog detection, Audio detection, Audio analytics (Scream, Gunshot, Explosion, Crashing), Auto tracking, Video loss, Alarm in, Dynamic event
	Device system events	Power status, Fan status, Recording status, Setting change, System status
Management		
Device	Supported devices	Wisenet NVR / DVR (SUNAPI v2.3.1 or later)
	Supported controller	SPC-2000, SPC-2001
	Maintenance	Viewing the device settings (device webpage), Updating the device firmware, Backup/Restore devices settings, Change devices password
Network protocol	IPv4, IPv6, TCP/IP, UDP/IP, RTP (UDP), RTP (TCP), RTSP, HTTP, DDNS, HTTPS, SUNAPI, P2P	
User	Assign permission/device/layout to user group, LDAP	
Log	Event log, System log, Audit log, Export log data to file (CSV)	
System settings	Backup/Restore/Reset Wisenet Viewer settings	
Maintenance	Software update notification	
Language	Total 23 languages Support English, French, German, Spanish, Italian, Russian, Chinese, Japanese, Korean, Turkish, Polish, Czech, Serbian, Romanian, Portuguese, Dutch, Croatian, Hungarian, Greek, Taiwanese, Danish, Finnish, Norwegian	
Performance		
Max channels	Up to 3000 channels (no limitations in s/w)	
Max DDNS/P2P channels	Up to 128 channels	
Max channels per layout	Up to 64 channels	
System		
System requirement	Recommended	CPU: Intel i7-11700 2.5GHz or faster RAM: 16 GB above, Video Memory 1GB above HDD: Performance SSD, 128GB higher VGA: NVIDIA T600 (OpenGL 2.1 support is required) LAN: 1GB NIC recommended Display Resolution : 1366X768 above, OpenGL compatible
	Minimum	CPU: Intel i3 or faster RAM: 4 GB higher HDD: 128GB higher VGA: 512MB higher (OpenGL 2.1 support is required) LAN: 1GB NIC recommended Display Resolution : 1366X768 above, OpenGL compatible
	Operating system	Windows 8.1/10/11 64bit, macOS 11/12/13, Ubuntu 20.04 LTS/22.04 LTS