



Network

PTZ

# XNP-9300RW

4K 30x IR PTZ with built-in wiper



## Key Features

- Max. 4K resolution
- 5~150mm(30x) optical zoom (digital 32x, total 960x zoom)
- Max. IR viewable length 200m
- Day & Night(ICR), extreme WDR, DIS(Built-in gyro sensor)
- Intelligent Analytics, Object auto tracking(Person/Vehicle), Target lock tracking
- H.264, H.265, MJPEG codec, WiseStreamII
- IP66, IK10, NEMA4X, NEMA-TS 2(2.2.8, 2.2.9)
- PTZ PLUS Design applied(Compact, Lighter, Simple cabling)
- SFP-supported by injector

## Compatible Accessories (Optional)



SBP-300LMW



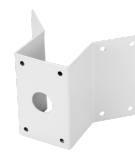
SBP-156HMW



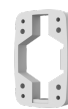
SBP-300WMW1



SBP-156LMW



SBP-300KMW



SBP-300BW



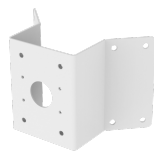
SBP-300PMW



SBP-156WMW



SBP-300WMW



SBP-156KMW



SBP-156CMW



SBP-300CMW

# XNP-9300RW

4K 30x IR PTZ with built-in wiper



## Specifications

| Video                       |   |
|-----------------------------|---|
| Imaging Device              | 1/2.8" CMOS   |
| Resolution                  | 3840x2160, 2592x1944, 2592x1464, 1920x1080, 1600x1200, 1280x1024, 1280x960, 1280x720, 1024x768, 800x600, 800x448, 720x576, 720x480, 640x480, 640x360, 320x240 |
| Max. Framerate              | H.265/H.264: Max. 30fps/25fps(60Hz/50Hz)<br>MJPEG: Max. 30fps/25fps(60Hz/50Hz)  |
| Min. Illumination           | Color: 0.1Lux(F1.6, 1/30sec)<br>BW: 0Lux(IR LED On)   |
| Lens                        |   |
| Focal Length (Zoom Ratio)   | 5~150mm(30x) zoom (digital 32x, total 960x zoom)  |
| Max. Aperture Ratio         | F1.6(Wide) - F4.56(Tele)  |
| Angular Field of View       | H: 57.42°(Wide)~2.19°(Tele) / V: 33.54°(Wide)~1.25°(Tele)   |
| Min. Object Distance        | 3m(9.84ft)  |
| Focus Control               | Oneshot AF, Focus save  |
| Lens Type                   | DC auto iris  |
| Pan / Tilt / Rotate         |   |
| Pan Range                   | 360° Endless  |
| Pan Speed                   | Max. 500°/sec, Manual: 0.024°/sec~250°/sec  |
| Tilt Range                  | 110°(90°~-20°)  |
| Tilt Speed                  | Max. 350°/sec, Manual: 0.024°/sec~250°/sec  |
| Sequence                    | Preset(300ea), Swing, Group(6ea), Trace, Tour, Auto Run, Schedule   |
| Preset Accuracy             | ±0.1°, Pan/Tilt correction  |
| Operational                 |   |
| Camera Title                | Displayed up to 85 characters   |
| Direction Indicator         | Support   |
| Day & Night                 | Auto(ICR)/Color/BW/Schedule   |
| Backlight Compensation      | BLC, HLC, WDR, SSSDR  |
| Wide Dynamic Range          | Extreme WDR(120dB)  |
| Digital Noise Reduction     | SSNR V  |
| Digital Image Stabilization | Support(built-in gyro sensor)   |
| Defog                       | Support   |
| Motion Detection            | 8ea, 8point polygonal zones   |
| Privacy Masking             | 32ea, Quadrangle Support<br>- Color: Grey/Green/Red/Blue/Black/White<br>- Mosaic  |
| Gain Control                | Manual / Max  |
| White Balance               | ATW /Narrow ATW /AWC /Manual /Indoor /Outdoor /Mercury /Sodium  |

Design and specifications are subject to change without notice. The latest product information / specification can be found at [HanwhaVision.com](http://HanwhaVision.com).

Hanwha Vision is formerly known as Hanwha Techwin.

|                          |   |
|--------------------------|---|
| Electronic Shutter Speed | Minimum / Maximum / Anti flicker (2~1/12,000sec)  |
| Video Rotation           | Flip, Mirror  |
| Analytics                | Directional detection, Fog detection, Face detection, Motion detection, Appear/Disappear, Enter/Exit, Loitering, Tampering, Virtual line, Shock detection<br>* Audio detection, Sound classification(with NW I/O Box) |
| Alarm Triggers           | Analytics, Network disconnect<br>* Alarm input(with NW I/O Box)   |
| Alarm Events             | File upload via FTP and e-mail<br>Notification via e-mail<br>SD/SDHC/SDXC or NAS recording at event triggers<br>PTZ Preset<br>Handover<br>* Alarm output(with NW I/O Box)   |
| IR Viewable Length       | 200m(656.17ft), Wise IR   |
| Water Removal            | Support(with Wiper, Lens heater)  |
| Auto Tracking            | Object auto tracking(Person/Vehicle), Target lock tracking  |

### Network

|                                   |   |
|-----------------------------------|---|
| Ethernet                          | Metal shielded RJ-45(10/100BASE-T)  |
| Video Compression                 | H.265/H.264: Main/Baseline/High, MJPEG  |
| Smart Codec                       | Manual(Sea area), WiseStream II   |
| Bitrate Control                   | H.264/H.265: CBR or VBR<br>MJPEG: VBR   |
| Streaming                         | Unicast(20 users) / Multicast (128 user)<br>Multiple streaming(Up to 10 profiles)   |
| Protocol                          | IPv4, IPv6, TCP/IP, UDP/IP, RTP(UDP), RTP(TCP), RTCP, RTSP, NTP, HTTP, HTTPS, SSL/TLS, DHCP, FTP, SMTP, ICMP, IGMP, SNMPv1/v2c/v3(MIB-2), ARP, DNS, DDNS, QoS, PIM-SM, UPnP, Bonjour, LLDP, SRTP, NTCIP   |
| Security                          | HTTPS(SSL) Login Authentication<br>Digest Login Authentication<br>IP Address Filtering<br>User access log<br>802.1X Authentication(EAP-TLS, EAP-LEAP)<br>Device certificate(Hanwha Techwin Root CA)<br>Cyber security assurance program UL CAP(UL 2900-1) |
| Application Programming Interface | ONVIF Profile S/G/T<br>SUNAPI(HTTP API)<br>Wisenet open platform  |

### General

|                  |   |
|------------------|---|
| Webpage Language | English, Korean, Chinese, French, Italian, Spanish, German, Japanese, Russian, Swedish, Portuguese, Czech, Polish, Turkish, Dutch, Hungarian, Greek |
| Edge Storage     | Micro SD/SDHC/SDXC 2slot 1TB  |
| Memory           | 4GB RAM, 512MB Flash  |

### Environmental & Electrical

|                                  |   |
|----------------------------------|---|
| Operating Temperature / Humidity | -40°C~+55°C(-40°F ~ +131°F) /<br>+74°C/+165°F (MAX) based on NEMA-TS 2(2.2.7)<br>* Start up should be done at above -30°C<br>0~100%RH(Condensing) Humidity control /w AIR sheet |
| Storage Temperature / Humidity   | -50°C ~ +60°C (-58°F ~ +140°F) / Less than 90% RH   |
| Certification                    | IP66, IK10, NEMA4X, NEMA-TS 2(2.2.8, 2.2.9)   |
| Input Voltage                    | HPoE(IEEE802.3bt, Class6, Type3, Injector included)   |
| Power Consumption                | Typical 20W, Max 42W  |

### Mechanical

|                  |                                       |
|------------------|---------------------------------------|
| Color / Material | White, Black / Aluminum+Polycarbonate |
| RAL Code         | White: RAL9003 / Black: RAL9005       |

Design and specifications are subject to change without notice. The latest product information / specification can be found at [HanwhaVision.com](http://HanwhaVision.com).

Hanwha Vision is formerly known as Hanwha Techwin.

**XNP-9300RW**

|                             |  |
|-----------------------------|--|
| Product Dimensions / Weight | ø184.9x318.8mm(7.28x12.55") / 5400g(11.90lb)                   |
| Hanging Mount (Dome)        | SBP-156HMW   |
| Ceiling Mount (Assy)        | SBP-156CMW, SBP-300CMTS, SBP-300CMW1/900CMW, SBP-150CMI/300CMI |
| Wall Mount                  | SBP-156WMW, SBP-390WMW2  |
| Pole Mount                  | SBP-300PMW2  |
| Parapet Mount               | SBP-156LMW, SBP-156LMW1, SBP-300LMW                            |
| Corner Mount                | SBP-156KMW, SBP-300KMW1  |
| Cabinet                     | SBP-300NBW   |

**DORI (EN62676-4 standard)**

|                           |  |
|---------------------------|--|
| Detect (25PPM/ 8PPF)      | Wide: 140.2m(460ft) / Tele: 4018.1m(13182.6ft) |
| Observe (63PPM/ 19PPF)    | Wide: 56.1m(184ft) / Tele: 1607.2m(5273.1ft)   |
| Recognize (125PPM/ 38PPF) | Wide: 28m(92ft) / Tele: 803.6m(2636.5ft)       |
| Identify (250PPM/ 76PPF)  | Wide: 14m(46ft) / Tele: 401.8m(1318.3ft)       |

# XNP-9300RW

4K 30x IR PTZ with built-in wiper



CAD

Unit:mm [inch]

