



Analog

Dome

# HCV-7020RA

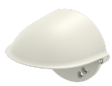
QHD (4MP) Analog Vandal-Resistant IR Dome Camera



## Key Features

- QHD (2560 x 1440, 30fps) resolution
- 0.27 Lux@F2.0 (Color) (HCV-7020R/7030R), 0 Lux (B/W : IR LED on)
- Built-in 4.0mm fixed lens (HCV-7020R)
- Day & Night (ICR), DWDR, Motion detection
- IR Viewable Length 25m(7020R)
- Transmission distance max.500m
- Easy installation (Plug & play), IP66, IK10

## Compatible Accessories (Optional)



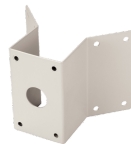
SBV-120WC



SBP-300CM



SBP-300PM



SBP-300KM



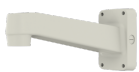
SBP-300WM1



SBP-300LM



SBP-137WM1



SBP-390WM2



SBP-300WM



SBP-300B



SBP-122HM



SPB-VAN12



SBP-300NB

## HCV-7020RA

QHD (4MP) Analog Vandal-Resistant IR Dome Camera



### Specifications

Video	
Imaging Device	1/3" 4MP CMOS
Resolution	2560x1440
Max. Framerate	30fps@4M(N), 25fps@4M(P)
Min. Illumination	Color: 0.27Lux(F2.0, 1/30sec) BW: 0Lux(IR LED on)
Video Out	BNC(AHD), additional CVBS for installation(2Pin connector type)
Video Transmission Distance	500m(5C2V Coaxial Cable)
Lens	
Focal Length (Zoom Ratio)	4.0mm fixed
Max. Aperture Ratio	F2.0
Angular Field of View	H: 78.22°, V: 41.21°, D: 87.91°
Min. Object Distance	0.5m(1.64ft)
Pan / Tilt / Rotate	
Pan / Tilt / Rotate Range	0°~350° / 0°~67° / 0°~355°
Operational	
Day & Night	Auto(ICR)
Backlight Compensation	UserBLC, HLC, DWDR
Digital Noise Reduction	2DDNR
Motion Detection	4 zones
Privacy Masking	2 zones
Gain Control	Low / Middle / High / Very High
White Balance	ATW / AWC / Manual / Indoor / Outdoor
Electronic Shutter Speed	1/30 ~ 1/12,000sec(N), 1/25~ 1/12,000sec(P)
Video Rotation	H-Rev/V-Rev
Analytics	Motion detection
IR Viewable Length	25m(82.02ft)
Coaxial Protocol	ACP(AHD Coax Protocol), CVBS: Pelco-C(Coaxitron)
Environmental & Electrical	
Operating Temperature / Humidity	-30°C ~ +55°C (-22°F ~ +131°F) / Less than 90% RH * Start up should be done at above -10°C
Certification	IP66, IK10
Input Voltage	12VDC
Power Consumption	Max 5W

---

## Mechanical

Color / Material	Ivory / Aluminum
Product Dimensions / Weight	Ø120.3 x 91.7mm(Ø4.74"x3.61"), 510g(1.12 lb)

---

## HCV-7020RA

QHD (4MP) Analog Vandal-Resistant IR Dome Camera



CAD

Unit:mm [inch]

