

# DC/DC converter

DC/DC converter 12VDC, IP67



CODE: **DCDC10H**  
TYPE: **12V/1A/55MM DC/DC converter**

EN/V

## Features:

- Power output 1A/12VDC\*
- DC power supply range 18÷40V DC
- high efficiency 87%
- IP 67 enclosure
- protections:
  - against short circuit protection
  - overload protection OLP
  - against reverse input voltage polarity
- warranty – 2 year from the production date



## DESCRIPTION

The DCDC converter is used for powering devices that require stabilized voltage of **12V DC**. The maximum current load is **1A\* (Pmax= 12W)**. This module does not have galvanic insulation between the input and output (IN-AUX), and operates on a common ground potential. The unit is protected against short circuit, overload and against reverse input voltage polarity.

## SPECIFICATIONS.

Supply voltage	18 ÷40V DC
Supply power	12W max.
Efficiency	87%
Output voltage	12V DC
Current consumption by converter systems	10mA max.
Output current $t_{AMB} < 30^{\circ}\text{C}$	<b>1A - refer to chart 1.</b>
Output current $t_{AMB} = 40^{\circ}\text{C}$	<b>0,7A - refer to chart 1.</b>
Ripple voltage	100mV p-p max.
Protection against short circuits (SCP) and overloads(OLP)	200% ÷ 400% of module power – output power limit, automatic return after elimination of short circuit
IP protection class	IP67
Operating conditions	temperature $-10^{\circ}\text{C} \div +40^{\circ}\text{C}$ relative humidity 20%...90%
Dimensions (LxWxH)	50 x 48 x 25 [mm]
Net/gross weight	0,10kg / 0,13kg
Length of DC input cable	0,3m
Length of DC output cable	0,5m + plug DC5,5/2,1 female
Storage temperature	$-20^{\circ}\text{C} \dots +60^{\circ}\text{C}$
Declarations, warranty	CE, RoHS, 2 year from the production date

\* In order to extend the life of the converter, the load current of 0,7A is recommended.

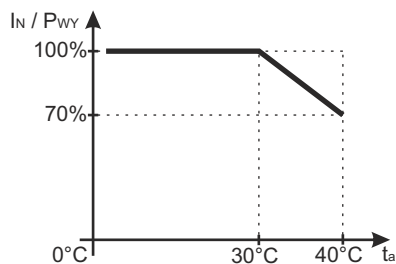


Chart 1.  
Relation between output current and ambient temperature (instantaneous load).

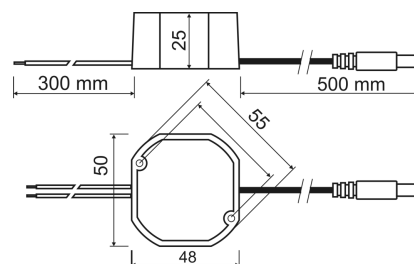
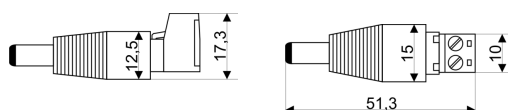


Fig. 1.  
Mechanical view and dimensions of the converter.

## ACCESSORIES

ACCESSORIES :  
[1] adapter CABLE - PLUG DC 5,5/2,1 - code ML109



For the converters are available accessories - cable adapter.  
For details –visit [www.pulsar.pl](http://www.pulsar.pl).

\* Refer to chart 1