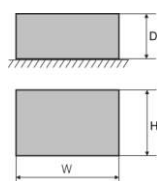
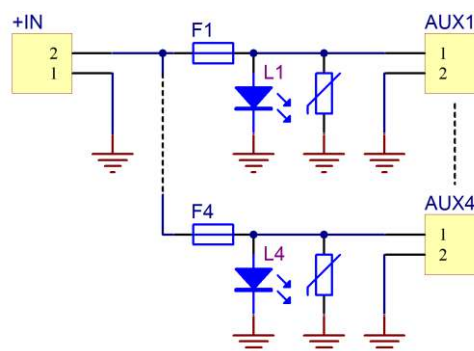


CODE: **AWZ535** v.1.1/VIII  
NAME: **LB4/4x0,5A/2,5/AW fuse module**

EN

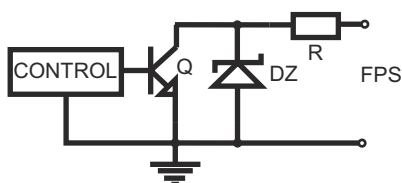


### DESCRIPTION

The **LB4/4x0.5A/2.5/AW** fuse module is designed for power distribution in low-voltage systems requiring voltage of **10V±30V DC** or **10V±24V AC** (e.g. buffer power supply, transformer etc.). It is fitted with the IN input for power supply and 4 independently protected AUX1÷AUX4 power supply outputs. Each AUX output is equipped with short circuit protection (SCP): melting fuse F 0.5A or PTC 0.5A polymer fuse (the possibility of using 1A fuses, not supplied) as well as with overvoltage protection - varistors. Output state is indicated by 4 L1 ÷ L4 LEDs. Fuse failure is indicated by turning off the appropriate LED: L1 for AUX1, L2 for AUX2 etc. Additionally, in the case of failure, the FPS output (Hi-Z state) and the L<sub>FPS</sub> LED are switched on. The FPS output can be used for remote control of a module e.g. external optical indication. The module is adapted for connection of cables with a maximum cross section of **2,5mm<sup>2</sup>**.

### SPECIFICATIONS

<b>Supply voltage</b>	10V±30V DC (-2%/+2%) 10V±24V AC (-2%/+2%)
<b>Output voltage</b>	$U_{AUX} = U_{IN}$ (equal to supply voltage)
<b>Current consumption</b>	6mA± 41mA @ $U_{in}=10 \div 30V$ DC 10mA± 32 mA @ $U_{in}=10 \div 24V$ AC
<b>Number of power inputs</b>	1 (IN terminals) – max. <b>2,5mm<sup>2</sup></b> cable
<b>Number of power outputs</b>	4 (AUX terminals) – max. <b>2,5mm<sup>2</sup></b> cable
<b>Protections against:</b> - a short circuit SCP - an overload OLP - a surge	- 4x F 0,5A fuse or PTC 0,5A (the possibility of using 1A fuses, not supplied)  - varistors
<b>LED indication</b>	- green LED <b>L1 ÷ L4</b> – status of the AUX1+AUX4 outputs - red LED <b>L<sub>FPS</sub></b> – indicates failure
<b>F1 ÷ F4 fuses</b>	F 0,5A or PTC 0,5A
<b>Operating conditions</b>	II environmental class, -10°C ÷ 50°C
<b>Dimensions</b>	125 x 43 x 32 (WxHxD) [mm]
<b>Installation</b>	a mounting panel with an adhesive tape, mounting screws x 2 (holes 3mm)
<b>Connectors:</b> - power supply input/output, technical output	Φ0,51±2,05 (AWG 24-12) 0,5 ÷ 2,5mm <sup>2</sup>
<b>Net/gross weight</b>	0,08kg / 0,12kg
<b>Declarations, warranty</b>	CE, 2 year from the production date



Electrical diagram of the OC output.